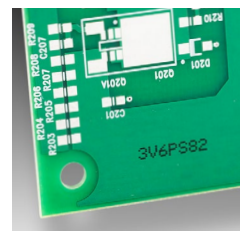
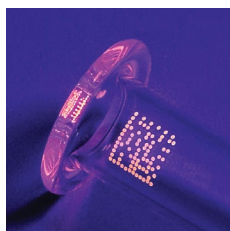




Continuous Inkjet

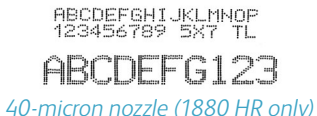



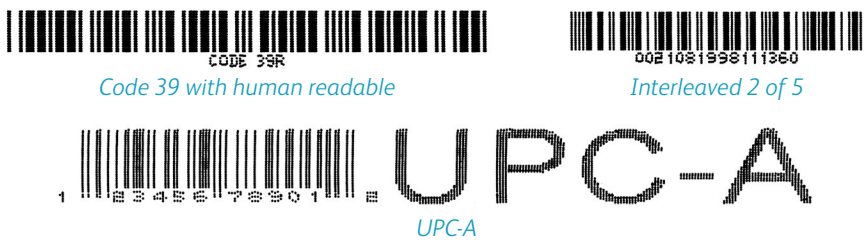
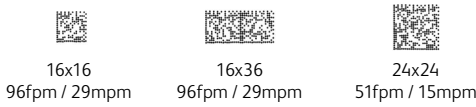
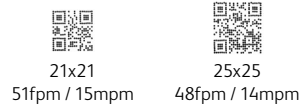
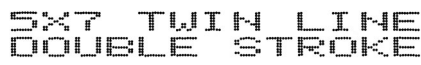
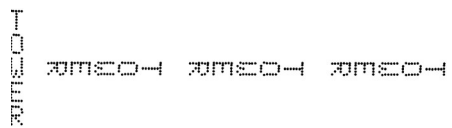
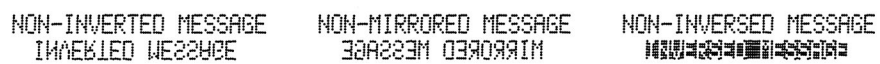


Videojet SIMPLiCiTY™ print sample guide



Videojet SIMPLICiTY™ print sample guide	
Font/Lines	Print Sample*
4x5 Single	ABCDEFGF 12345 4X5
5x5 Single	ABCDEFGF 12345 5X5
4x7 Single	ABCDEFGF 12345 4X7
5x7 Single	ABCDEFGF 12345 5X7
7x9 Single	ABCDEFGF 12345 7X9
9x12 Single	ABCDEFGF 12345 9X12
10x16 Single	ABCDEFGF 12345
16x24 Single	ABCDEFGF 123
25x34 Single	ABCD 12
4x5 Twin	ABCDEFGHIJKLMNO 1234567890
5x5 Twin	ABCDEFGHIJKLMNO 1234567890 5X5 TL
4x7 Twin	ABCDEFGHIJKLMNO 1234567890 4X7 TL
5x7 Twin	ABCDEFGHIJKLMNO 1234567890 5X7 TL
7x9 Twin	ABCDEFGHIJKLMNO 1234567890 7X9 TL
9x12 Twin	ABCDEFGHIJKLMN 1234567890 9X12 TL
10x16 Twin	ABCDEFGHIJKLMNO 1234567890 10X16
4x5 Three	ABCDEFGHIJKLMNO 1234567890 3 LINES OF PRINT
5x5 Three	ABCDEFGHIJKL 123567890 5X5 TRI LINE
4x7 Three	ABCDEFGHIJKLMNO 1234567890 4X7 TRI LINE
5x7 Three	ABCDEFGHIJKLMNO 1234567890 5X7 TRI LINE
7x9 Three	ABCDEFGHIJKL 1234567890 7X9 TRI LINE
4x5 Four	ABCDEFGHIJKLMNO 1234567890 4 LINES OF PRINT 4 X 5 GUAD LINE
5x5 Four	ABCDEFGHIJKLMNO 1234567890 4 LINES OF PRINT 5X5 GUAD LINE
4x7 Four	ABCDEFGHIJKLMNO 1234567890 4 LINES OF PRINT 4 X 7 QUAD LINE
5x7 Four	ABCDEFGHIJKLMO 1234567890 4 LINES OF PRINT 5X7 QUAD LINE
5x5 Five	ABCDEFGHIJKLMNO 1234567890 5 LINES OF PRINT 5 X 5 FIVE LINE 60 MICRON NOZZLE

Max. line speed for font/lines as shown feet per minute (fpm) / metres per minute (mpm)				
1240/1280	1580 +	1880 +	1880 HR	1880 UHS
640 / 195	1,097 / 334	1,097 / 334	1296 / 395	1,665 / 508
535 / 163	914 / 279	914 / 279	1,078 / 329	1,338 / 423
548 / 167	960 / 293	960 / 293	862 / 263	1,111 / 339
456 / 139	800 / 244	800 / 244	719 / 219	925 / 282
236 / 72	356 / 108	535 / 163	588 / 179	835 / 254
256 / 78	256 / 78	256 / 78	462 / 141	554 / 169
194 / 59	194 / 59	305 / 93	230 / 70	398 / 121
95 / 29	95 / 29	95 / 29	66 / 20	125 / 38
56 / 17	56 / 17	56 / 17	NA	NA
308 / 94	308 / 94	453 / 138	410 / 125	835 / 254
256 / 78	256 / 78	377 / 115	340 / 104	694 / 212
233 / 71	321 / 98	453 / 138	289 / 88	625 / 191
194 / 59	266 / 81	377 / 115	239 / 73	522 / 159
95 / 29	125 / 38	230 / 70	129 / 39	297 / 91
85 / 26	85 / 26	85 / 26	NA	NA
56 / 17	56 / 17	56 / 17	NA	NA
115 / 35	151 / 46	366 / 111	236 / 72	588 / 179
95 / 29	125 / 38	305 / 93	196 / 60	490 / 149
108 / 33	108 / 33	274 / 84	161 / 49	436 / 133
89 / 27	89 / 27	230 / 70	134 / 41	362 / 110
56 / 17	56 / 17	121 / 37	NA	NA
102 / 31	102 / 31	233 / 71	NA	NA
85 / 26	85 / 26	194 / 59	NA	NA
66 / 20	66 / 20	163 / 50	NA	NA
56 / 17	56 / 17	136 / 42	NA	NA
56 / 17	56 / 17	56 / 17	NA	NA

Videojet SIMPLICITY™ print sample guide

Description	Print Sample*	
<p>Choice of 40, 50, 60 or 70-micron nozzle</p> <p>Options to print standard sized codes or bigger, bolder codes for higher contrast</p>	 <p>40-micron nozzle (1880 HR only)</p>	 <p>50-micron nozzle (1880 UHS only)</p>
	 <p>60 Micron nozzle</p>	 <p>70 Micron nozzle</p>
<p>Linear bar codes</p> <p>Wide range of bar codes for automatic identification. UPC-A&E; EAN-8&13; Code 128 A, B&C; EAN-128; Code 39; Interleaved 2 of 5</p>	 <p>Code 39 with human readable</p> <p>Interleaved 2 of 5</p> <p>UPC-A</p>	
<p>2D Codes</p> <p>Wide range of standard 2D DataMatrix and QR (Codes shown were printed by the 1880 HR and max. line speed refers to 1880 HR only. Additional matrices available depending on model.)</p>	 <p>DataMatrix Codes</p>	 <p>QR Codes</p>
<p>Multi-stroke</p> <p>Highlight words or numbers and make codes darker and bolder</p>		
<p>Tower print</p> <p>Stacked and automatic reverse</p>		
<p>Inverted / mirrored / inversed characters</p> <p>Accommodates product lines going any direction and products in various orientations on the production line</p>	 <p>NON-INVERTED MESSAGE</p> <p>NON-MIRRORED MESSAGE</p> <p>NON-INVERSED MESSAGE</p>	
<p>Unique-character languages</p>	 <p>Chinese</p> <p>Japanese</p> <p>Arabic</p>	
<p>Graphics and logos</p> <p>Create custom logos on PC and upload via USB</p>		

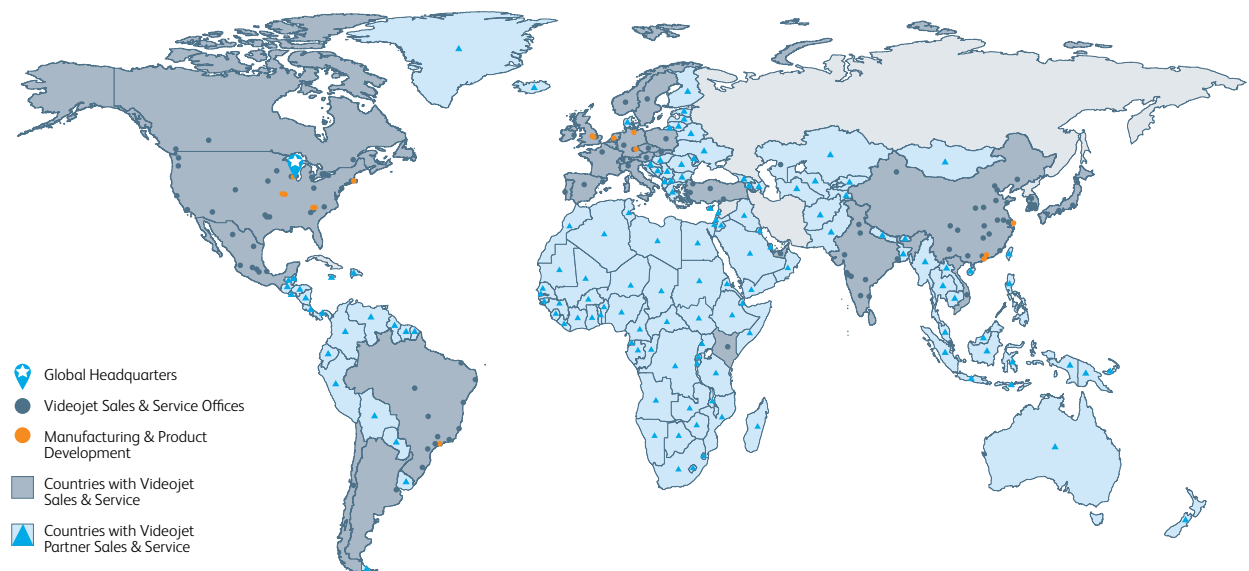
*The print sample codes shown in this guide are for illustrative purposes only. Actual coding is dependent on environment, application, raster and substrate. The Videojet SIMPLICITY™ continuous inkjet printers use automatic select function to determine the suitable raster for the actual print speed. Please ask your local Videojet representative to see print samples for your specific application.

Peace of mind comes as standard

Videojet Technologies is a world-leader in the product identification market, providing in-line printing, coding and marking products, application specific fluids and product LifeCycle Support.

Our goal is to partner with our customers in the consumer packaged goods, pharmaceutical, and industrial goods industries to improve their productivity, to protect and grow their brands, and to stay ahead of industry trends and regulations. With our customer application experts and technology leadership in Continuous Inkjet (CIJ), Thermal Inkjet (TIJ), Laser Marking, Thermal Transfer Overprinting (TTO), case coding and labelling, and wide array printing, Videojet has more than 400,000 printers installed worldwide.

Our customers rely on Videojet products to print on over ten billion products daily. Customer sales, application, service and training support is provided by direct operations with over 4,000 team members in 26 countries worldwide. In addition, Videojet's distribution network includes more than 400 distributors and OEMs, serving 135 countries.



Call **+971 4 550 8756**
Email **MEA.Sales@videojet.com**
or visit **www.videojet.ae**

Videojet Technologies Inc.
Dubai Healthcare City Building #34
3rd floor, P.O. Box 71569
Dubai, United Arab Emirates

© 2024 Videojet Technologies Inc. — All rights reserved.
Videojet Technologies Inc.'s policy is one of continued product improvement.
We reserve the right to alter design and/or specifications without notice.

Part No. SL000701
pg-simplicity-printers-mea-0224

